

# THE Councilor



Shawnee Mission  
Area Council  
**PTA**<sup>®</sup>

*every child. one voice.*

## President's Message

September was a difficult time for all. We can now look at the calendar and see the last day that our days had a sense of reliability or predictability. We hardly noticed the modest routines: the family outings, household chores, PTA meetings, and rides to and from school. This normalcy led to security, building upon itself until we took it for granted. The threats to us always seemed remote. We watched those threats on television and they never really became real. Everything changed that Tuesday morning. I miss the assurance that life will be what it has been. I miss the America that knew it was different, protected, open to the world, yet protected from its evils.

Now is a time to reassess what is truly important. It has

become increasingly clear that we are a society that has been obsessed with the trivial. We must continue with the daily routines, but I hope we are all hugging our children more often and more tightly, letting them know we will always love them and will do all that we can to keep them safe. If parents at your building need resources to help them talk to their children about the terrorist attacks, the Kansas PTA web site ([ptasonline.org/KPTA](http://ptasonline.org/KPTA)) offers links to various resources.

My contacts with all of you indicate your units are running smoothly and you are doing wonderful things. If Shawnee Mission Area Council can help you in any way, please don't hesitate to contact us. I look forward to

seeing you at the Oct. 17 *Meet the Administrators* meeting at Indian Creek Technology Center at 7 p.m.

Thank you for all you do for all children.

Kim Pflaum,  
SMAC President



### Inside this issue:

<b>Admin. Asst. Report</b>	2
<b>Share Great Ideas</b>	3
<b>School Finance Forum</b>	4
<b>SMC Dues</b>	5
<b>Halloween Safety</b>	7

## Administrative Assistant's Report

The Administrative Assistant (formerly First Vice President) helps to co-ordinate the chairs for Administrators' Dinner, Bulk Mail, Fundraising and Carnival, Membership and Presidents' Reception.

Debbie Lawson (541-0806) is planning this year's **Administrators' Dinner** to be held during National Education Week at Shawnee Mission West. It is sure to be a tasteful and "SMAC-tacular" event on Thursday, Nov. 15. All unit presidents, principals and SMAC chairs and their spouses are invited to attend.

Maureen Frazell (381-5413) helps units keep informed about the dos and don'ts of **Bulk Mail** procedures. All units wishing to use the SMAC bulk mail permit must contact Maureen first.

**Fundraising and Carnival** questions may be directed to Jeanne Slaughter (342-8211). Jeanne has experience with carnivals and silent auctions. A workshop featuring Jeanne and treasurer, Joni Etherington, is being planned for this fall.

Cynthia Jarrold (381-1543) has distributed **Membership** cards to all units this fall. She acts as a liaison between the local unit and the state office for membership questions. Cynthia will present special membership awards and a workshop at the School of Instruction in May.

An informative and well-attended **Presidents' Reception** was planned by Janet Jackson (262-0346). It was held on Aug. 24 as a great start to a new school year.

Feel free to contact these chairs or me with any questions you might have. The SMAC chairs and officers are happy to share their knowledge and experience with you.

Rae Ann Kobylinski, SMAC Administrative Assistant, 341-9124

## ADMINISTRATORS' DINNER

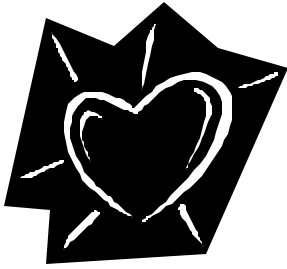
**Thursday, Nov. 15, 6:15 p.m.**  
**Shawnee Mission West**

Join us this year at the "SMAC-TACULAR" Administrators' Dinner to be held at Shawnee Mission West. It promises to be a wonderful evening as we honor our Shawnee Mission District Administrators with dinner and entertainment.

All PTA Presidents and their spouses, Area Council Chairmen and officers and their spouses should plan to attend. PTA Presidents, please invite your school principal and his/her spouse to attend as guests of your unit.

Mark your calendar now for this important event! Reservation cards should be returned no later than Oct. 24.

Debbie Lawson, Administrators' Dinner Chair



## Shawnee Mission Students and PTAs Open Their Hearts

Our Shawnee Mission Students, with the help of PTA, responded to the attacks on America with heartwarming support of the victims and overwhelming pride in being Americans.

Debbie Kremers, Broken Arrow PTA President sent home a flyer with the students on Sept. 13 asking them to show their compassion for mankind and the confidence to make a difference by wearing red, white, and blue clothing on the

National Day of Remembrance, as well as, by bringing in donations for the American Red Cross.

With just that one flyer, the students, parents, and staff opened their hearts and wallets and donated more than \$2,700. In addition, red, white, and blue became the uniform of unification to show American pride. Debbie said, "It was a wonderful experience to provide this outlet for our community at Broken Arrow Elementary and to see how much they responded."

At Westridge Middle School, the PTA sponsored "Westridge Care." The PTA placed signs throughout the building saying, "Westridge Students for Change" and asked the students to bring in their "change" to be donated to the American Red Cross. One young lady brought in a 1-gallon canning jar filled with change and a \$20 bill on top. Several stories included students giving up their allowances and lunch money. At the week's end, the total donated exceeded \$700.

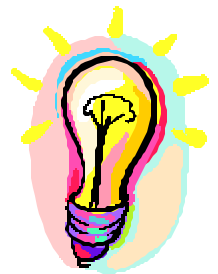
Thank you to our Shawnee Mission PTAs for support and leadership in turning this experience into one of unity, pride, and outreach. Also, thank you to our students and Shawnee Mission School staff for their response.

Be sure to pass on your PTA's stories of Student Volunteerism for future issues of *The Councilor*. We want to hear your "Good News." Send to Jill Connell @ [connellcc@everestkc.net](mailto:connellcc@everestkc.net) or call 894-9554.

## Share Your Great Ideas!

Presidents, does your unit have a specific program or event that you are particularly proud of or feel is extremely beneficial to the children and/or parents? Now is your opportunity to share your hard work, ingenuity and ideas with all of the other people working for the children of our area.

Each year, the December issue of *The Councilor* highlights the special activities of each unit in the council. Presidents, send articles detailing one of your programs to Janet Martz, 5301 W. 65<sup>th</sup> Place, Prairie Village, KS 66202; email [jbmartz@juno.com](mailto:jbmartz@juno.com), or via interschool mail to Janet Martz/PTA, Highlands Elementary School. Articles must be received by Dec. 5. Take this opportunity to showcase your unit!



*We are on the Web at [www.ptasonline.org/smac/](http://www.ptasonline.org/smac/)*

## SCHOOL FINANCE COMMUNITY FORUM

### "SCHOOLS, TAXES AND YOU!"

Is there a crisis?

Plan to attend this important event on education funding issues scheduled for Tuesday, Nov. 6 at the Overland Park Marriott Hotel, 10800 Metcalf Avenue.

Exhibitors will be available from 6:30 p.m. to 7:30 p.m. A panel discussion will be held from 7:30 p.m. to 9 p.m. Education

panelists include Bob Corkins, Kansas Public Policy Institute; Senators Kay O'Connor and John Vratil; and Marga Spangler, Chair of Johnson County Chambers of Commerce. Dave Helling, KCTV 5 News will moderate the panel discussion.

Invited exhibitors include the following school districts: Blue Valley, De Soto,

Gardner-Edgerton, Olathe, Shawnee Mission and Spring Hill. Additional exhibitors include the Kansas Taxpayers Network and Kansas Public Policy Institute.

PTA Presidents and Legislative Chairs will be sent a flier on this forum through the internet and mail. Reproduce and distribute this flyer for your PTA membership.

It is important that this forum have a large PTA turnout to demonstrate our interest on this issue.

"As a public system, the success of public schools depends upon involvement of concerned citizens." - from the PBS documentary *School*.

Cathy Boyer-Shesol,  
SMAC Legislative  
Chair

## American Education Week, Nov. 11-17

American Education Week was first observed in 1921 and has been recognized each year since. It offers a perfect opportunity to raise public awareness of the needs and virtues of public schools. It is a week for showing our appreciation for all who make a difference in our schools: administrators, teachers, educational support personnel, parents and community volunteers. It is a week for building partnerships

between schools and communities on behalf of our students. It is a week for strengthening the connection between public schools and the public.

The theme of this year's celebration, "Together: Making Public Schools Great for Every Child," reflects our combined commitment to get all students to learn and succeed. The interaction between children, parents and teachers cannot be underplayed. If the

partnership between teacher and parent is strong, the child's chances of success skyrocket.

American Education Week is always observed the week prior to the week of Thanksgiving. Wednesday, Nov. 14 is National Education Support Personnel Day and was established to honor the contributions of the school support staff. The National PTA is one of the co-sponsors of these

events. On Nov. 15, Shawnee Mission Area Council of PTA will host the Administrators' Dinner for all building principals, PTA presidents, and district officials.

Take time during the week to show your appreciation to those who make a difference in your school. Various ideas can be found on the NEA's website, [www.nea.org/aew](http://www.nea.org/aew).

# SMAC Dues & Clothing Center Donations

## DUES

Shawnee Mission Area Council of PTA dues are \$35 per unit.

Checks should be made payable to SMAC PTA and be sent as soon as possible with the short form below to:

Joni Etherington  
 3308 W. 87th St.  
 Leawood, KS 66206

Call Joni with questions at 642-4064.

---

## CLOTHING CENTER CASH DONATIONS

The SMAC Clothing Center is staffed by officers and chairs from the Area Council and with volunteers from each of the local PTA units. The Center relies on donations from the local PTA units to provide brand new socks and underwear to children in need. Donations of clothing are also appreciated. Clothing at the Center is available to any person living within the boundaries of the Shawnee Mission School District. The Clothing Center provides a valuable service to many families living in our area.

### SMAC Dues and Clothing Center Donations Mail-in Form

Unit Name \_\_\_\_\_

SMAC PTA Dues (\$35 for each Shawnee Mission School) \$ \_\_\_\_\_

Clothing Center Donation (Used to purchase new socks/underwear) \$ \_\_\_\_\_

**Write two separate checks to SMAC PTA.  
 Make notation on each check: Dues or Clothing Center**

*Thank you for your continuing support!*

## Child Health Month

October is Child Health Month. As all of us know, there are many health issues out there concerning children. The American Academy of Pediatrics website - aap.org - has many good articles regarding child health issues. The article regarding Halloween Safety (on page 7 of this newsletter) is directly from their website. Click on their site to check out fact sheets such as: "Tobacco & Alcohol: Gateway Drugs?", "Strategies to Keep your Child Substance Free", "It's Too Easy: Drugs, the Internet and Your Children", "How to Prevent Teen Drinking & Drug Use", and "Drug Facts Sheet". They also have brochures that you may print for educational purposes regarding cocaine, inhalant abuse, marijuana, steroids, and substance abuse as well as information concerning immunizations, child abuse, child suicide, SIDS and many more. Check with your local pediatrician for programs here in the metro and/or contact the Kansas Pediatrics Association at: [Kansasaap@aol.com](mailto:Kansasaap@aol.com).

### Meet the Administrators at the SMAC General Meeting

Wednesday, Oct. 17  
7 p.m.  
Indian Creek Technology Center  
4401 W. 103rd Street

Join the members of SMAC for the second general meeting of the year. You will have the opportunity to speak with five of the district administrators in a small group setting. This meeting will be held at Indian Creek Technology Center where there is more room to break into groups. The program will begin at 7 p.m. Share this information with your units. Hope to see you there!

## Kansas PTA Citizenship Contest

**Theme for 2001-02...**

*"I can improve my state of Kansas by..."*

An essay and poetry contest to promote citizenship for grades 5 - 9.

**REMINDER:** All entries are due at the SMAC level on Oct. 19.

For more information, Contact Lisa Schroeder at 859-9277 or  
[email\\_cubs\\_9999@aol.com](mailto:email_cubs_9999@aol.com)

# Halloween Safety Tips



Halloween is an exciting time of year for kids, and we can all make sure that children have a safe holiday with the following tips.

## "All Dressed Up..."

- Create a costume from fire-retardant material. If you are going to purchase a costume, buy one that is flame-resistant. Make sure the costume is short enough so that children don't trip.
- Use face paint and hats rather than masks. Loose-fitting masks with small eyeholes can obstruct a child's vision. Secure hats tightly so they don't slip over your child's eyes.
- Children who will be trick-or-treating after dusk should have reflective tape on their costumes and carry flashlights with fresh batteries. Allow them to carry only flexible swords and other props.
- Dress children in comfortable shoes that fit. Adult-size shoes can cause blistering or make a child trip and fall.

## "Carving a Niche..."

- Small children should never carve pumpkins. Children can draw a face with markers, then parents can do the cutting. Under parents' supervision, children ages 5 to 10 can carve with pumpkin cutters equipped with safety bars.
- Votive candles are safest for candle-lit pumpkins.
- Lighted pumpkins should be placed on a sturdy table, away from curtains and other flammable objects, and should never be left unattended.

## "Healthy Halloween..."

- Serve kids a healthy dinner (with foods they like) before trick-or-treating, so they won't fill up on candy.
- Offer trick-or-treaters something other than candy. Give them colorful pencils, stickers, large erasers or decorative shoelaces.
- Set a number of days candy can remain in the house before it gets thrown out.
- Children shouldn't snack while they're trick-or-treating. Parents should check treats at home.
- Watch for signs of tampering, such as small pinholes in wrappers and torn or loose packages.
- Parents of young children should get rid of choking hazards such as gum, peanuts, hard candies or small toys.

## "Home Safe Home..."

- To keep their home safe for visiting trick-or-treaters, parents should remove anything a child could trip over such as garden hoses, toys, bikes and lawn decorations.
- Parents should check outdoor lights and replace burned-out bulbs.
- Wet leaves should be swept from sidewalks and steps.

Remember that Halloween is for children of all ages... so get involved with your little ghost or goblin!

Have a safe and happy Halloween!

These Halloween safety tips are from the American Academy of Pediatrics Web site (<http://www.aap.org>).  
(c) 2001 American Academy of Pediatrics.

## Dates To Remember

### OCTOBER

17	Wed.	General Mtg. -Meet the Administrators	7 p.m.	Indian Creek
19	Fri.	KS PTA Citizenship Contest entries due at SMAC level		
14-27	Sun.-Sat.	National School Bus Safety Weeks		
24	Wed.	Middle School Exchange	9 a.m.	McEachen

### NOVEMBER

6	Tues.	School Finance Community Forum	6:30 p.m. to 9 p.m.	Overland Park Marriott
7	Wed.	Executive Committee Meeting	9:30 a.m.	McEachen
15	Thurs.	Administrators' Dinner	6:15 p.m.	SM West High School
11-17	Sun.-Sat.	American Education Week		
12-17	Mon.-Sat.	National Children's Book Week		

### DECEMBER

5	Wed.	Executive Session	9:30 a.m.	McEachen
---	------	-------------------	-----------	----------



The Councilor  
**SMCA-PTA**  
7235 Antioch  
Shawnee Mission,

**Non-Profit Org.**  
**U. S. Postage Paid**  
**Shawnee Mission, KS**  
**PERMIT NO. 131**

## INSIDE

**School Finance Community Forum**